

Exothermic Welding

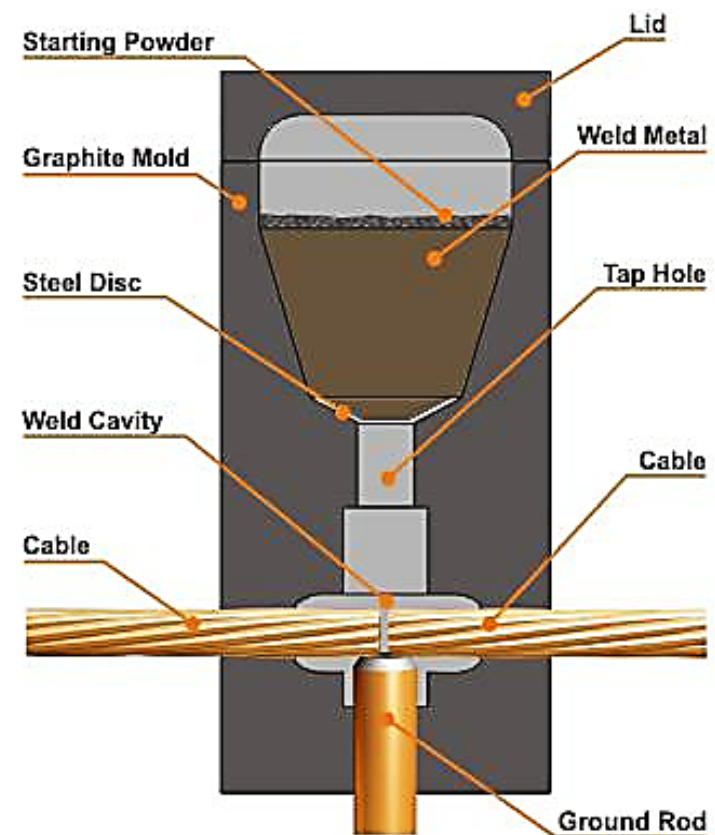


Exothermic Welding

Exothermic welding process is a molecular chemical reaction between copper oxide and aluminium, generates a tremendous superheat with molten metals reaching approximately 2600 °C

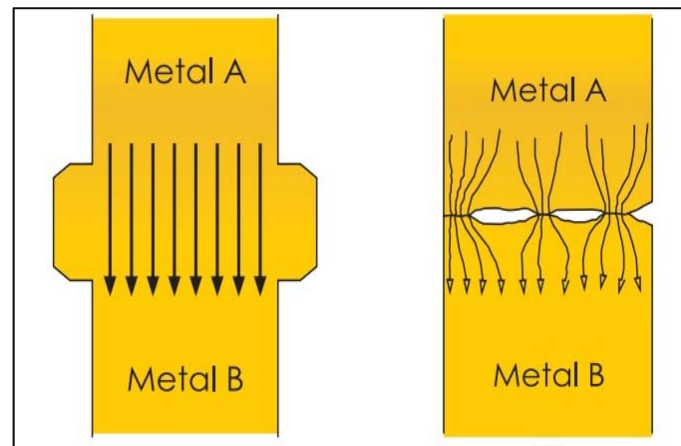


• Completed Connection



Exothermic Welding

Exothermic Welding vs Mechanical Connector



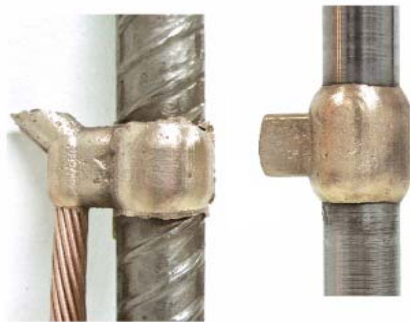
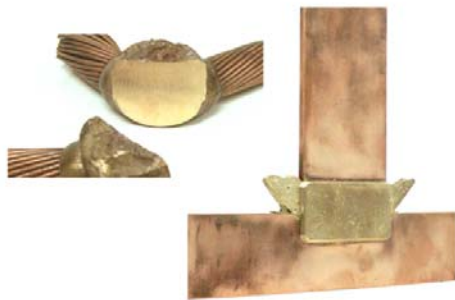
Exothermic Welding

Sample for not proper connection

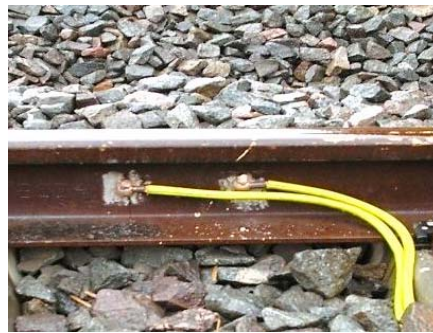


Exothermic Welding

Exothermic Welding Application



Electrical General Purpose



Railway



Cathodic Protection