



# NAVILITE

## Low intensity type A and B



NAVILITE-48V-cable + stainless bracket

### One-piece molded

- perfectly waterproof
- no corrosion risk
- lifetime 10 times higher than for incandescent lights
- no rise from the ground potential (due to lightning for example)
- bird spike

### LED light

- Total of 64 diodes
- 16 circuits of 4 LEDs
- LED wiring 4 by 4 in active redundancy @ 90°
- molding provides perfect support of the LED inclination angle
- excellent heat dissipation

### 2 options : Pods or cable

- Continuous current 12, 24 and 48 VDC
- optional power supply through a backup power source for continuity of the marking ( batteries) or through solar generator.
- Available with terminal connection or 35cm cable

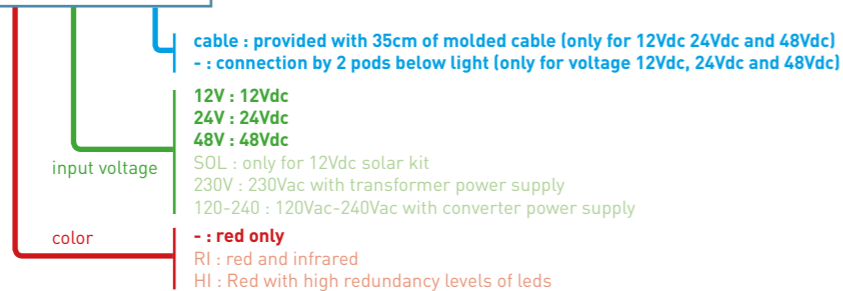
Wiring by pod



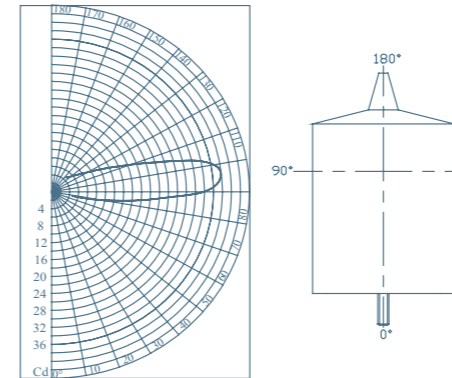
Molded cable



### NAVILITE - XX - XXX - cable



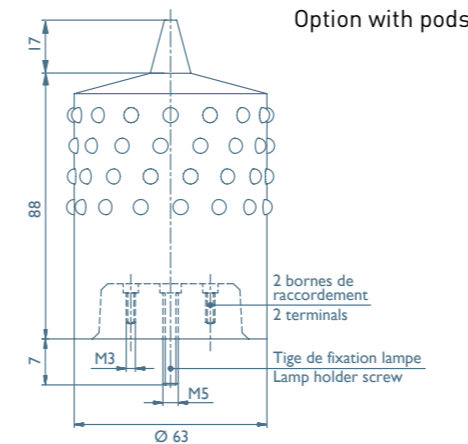
### LIGHT INTENSITY DIAGRAM



	NAVILITE Type A
IP degree	66
Operating temperature	-40° + 55°C
Power supply	12, 24, 48 VDC (+/-10%)
Light weight	370 g
Attachment	M5 screw (provided)
Maintenance	none

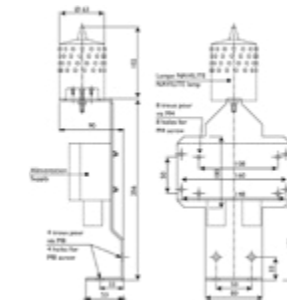
\* The weight of the fixing bracket is 0.75kg

### DIMENSIONS (IN MM)



### ACCESSORIES

- Stainless steel mounting bracket - P/N 113920 for Navilite & optional box.



- Monitoring box for Navilite 48V (see page 30)
- Junction box (P/N 113943) (see page 30)
- Battery Cabinet with 12 hours power backup (see page 54)

### MAIN REFERENCE

	Designation	Part number	Power supply	Luminous intensity	Electrical current	Nominal power	Theoretical lifetime*
Pod	NAVILITE-48V	113900	48 VDC	> 32 Cd	125 mA	6 W	decades
	NAVILITE-24V	113901	24 VDC	> 32 Cd	250 mA	6 W	
	NAVILITE-12V	113902	12 VDC	> 32 Cd	500 mA	6 W	
Cable	NAVILITE-48-cable	113905	48 VDC	> 32 Cd	125 mA	6 W	
	NAVILITE-24-cable	113906	24 VDC	> 32 Cd	250 mA	6 W	

\* given by LED manufacturer

