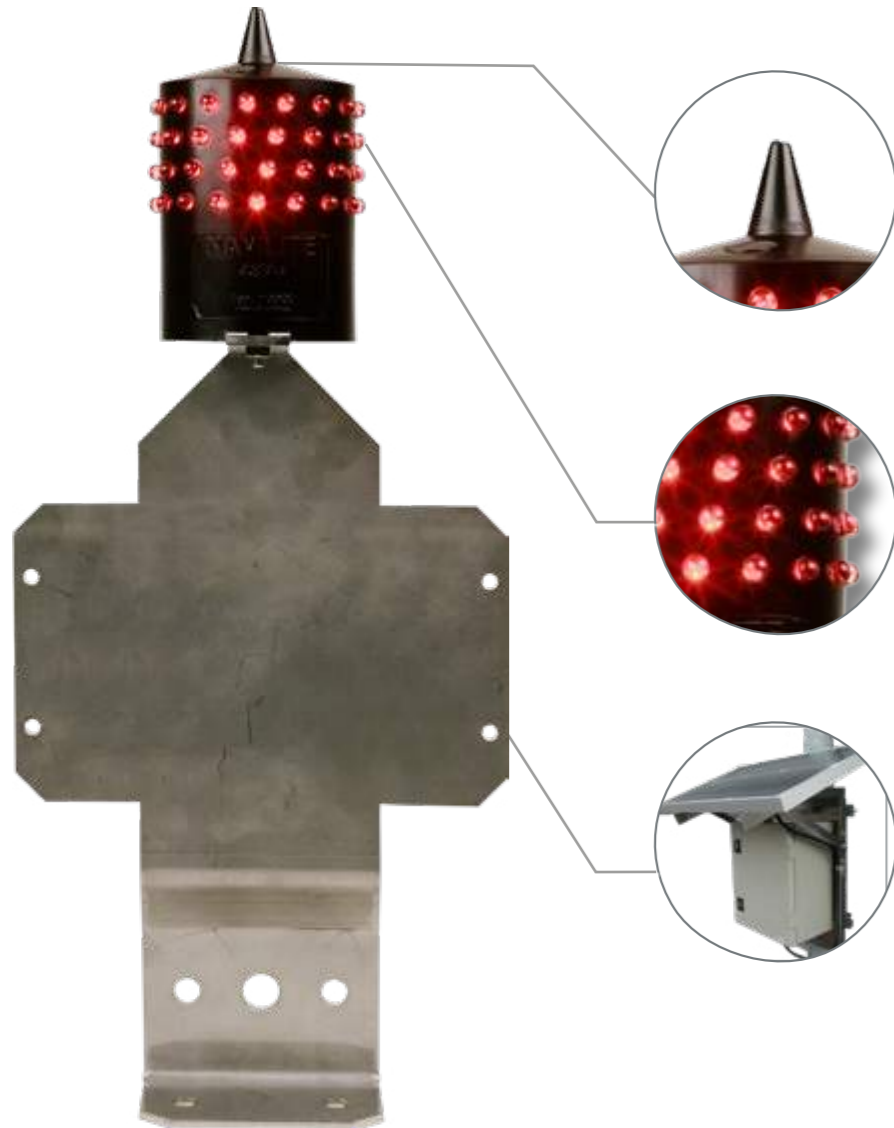




SOLAR NAVILITE 12 VDC

Low intensity type A



One-piece molded

- perfectly waterproof
- no corrosion risk
- lifetime 10 times higher than for incandescent lights
- no rise from the ground potential (due to lightning for example)
- bird spike

LED light

- Total of 64 diodes
- 16 circuits of 4 LEDs
- LED wiring 4 by 4 in active redundancy
- molding provides perfect support of the LED inclination angle
- excellent heat dissipation

OBSTA Solar kit

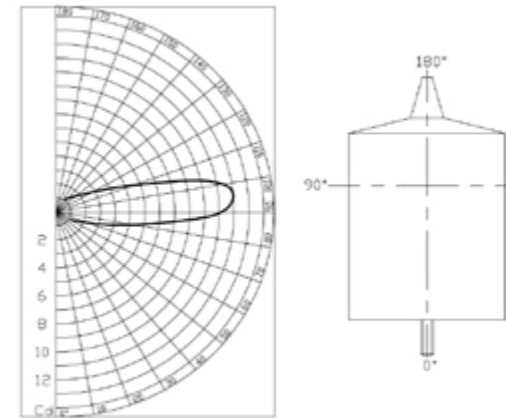
- Continuous current 12 VDC with regulation
- optional Obsta solar generator.
- Size depending on latitude and longitude.

NAVILITE - SOL + stainless bracket

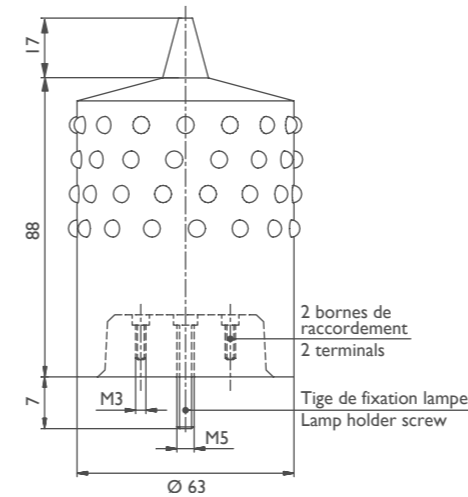
NAVILITE - XX - XXX - cable



LIGHT INTENSITY DIAGRAM



DIMENSIONS (IN MM)

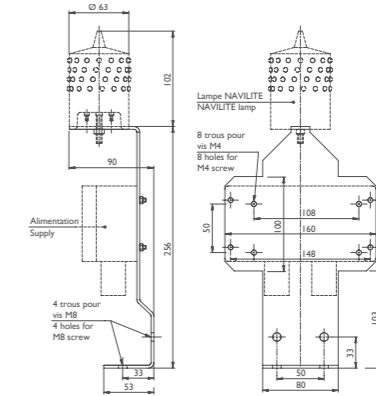


	NAVILITE Type A
IP degree	66
Operating temperature	-40° + 55°C
Power supply	>12 VDC from Obsta Solar Kit
Light weight	370 g
Attachment	M5 screw (provided)
Maintenance	none

* The weight of the fixing bracket is 0.75kg

ACCESSORIES

- Stainless steel mounting bracket - ref. 113920



- "Main and back-up" command box P/N 113942 for 2 NAVILITE-SOL
- Solar kit P/N 1003SOL (see page 53)

MAIN REFERENCE

Designation	Part number	Power supply	Luminous intensity	Electrical current	Nominal power	Theoretical lifetime*
NAVILITE-SOL	113903	12 VDC	> 10 Cd	250 mA	< 3 W	Decades

* given by LED manufacturer

